



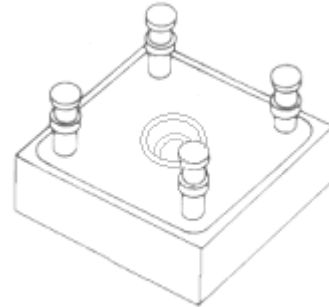
180 Lafayette Road  
 North Hampton, NH 03862-2448  
 PH: 603-964-3165  
 FX: 603-964-3168  
 WWW.PDEELECTRONICS.COM

## Rectifier Assembly

Single Phase Full Wave Bridge  
 SCAJ Series Rev A

### FEATURES

- PIV: 50-600 Volts
- Recovery Times: from 30nS to 2000nS
- Only Glass Passivated Diodes Used
- Controlled Avalanche Characteristics
- Aluminum Heat Sink Case
- Electrically Insulated Case
- Corrosion Resistant Black Anodize Case



### ABSOLUTE MAXIMUM RATING

Average DC Output Current ( $T_C=55^\circ\text{C}$ )	
SCAJx.....	5 Amps
SCAJxxF.....	4.5 Amps
SCAJxxFF.....	5 Amps
Average DC Output Current ( $T_C=100^\circ\text{C}$ )	
SCAJx.....	3.5 Amps
SCAJxxF.....	3 Amps
SCAJxxFF.....	3.8 Amps
Repetitive Surge Current	
SCAJx.....	10 Amps
SCAJxxF.....	N/A
SCAJxxFF.....	13 Amps
One Cycle Surge Current (8.3mS, half sine, $T_J=25^\circ\text{C}$ )	
SCAJx.....	50 Amps
SCAJxxF.....	25 Amps
SCAJxxFF.....	35 Amps
Storage and Operating Temperature.....	
-55°C to 150°C	
Maximum Thermal Resistance (junction to case).....	
5.0°C/W typical	



180 Lafayette Road  
 North Hampton, NH 03862-2448  
 PH: 603-964-3165  
 FX: 603-964-3168  
 WWW.PDEELECTRONICS.COM

## Rectifier Assembly

Single Phase Full Wave Bridge  
 SCAJ Series

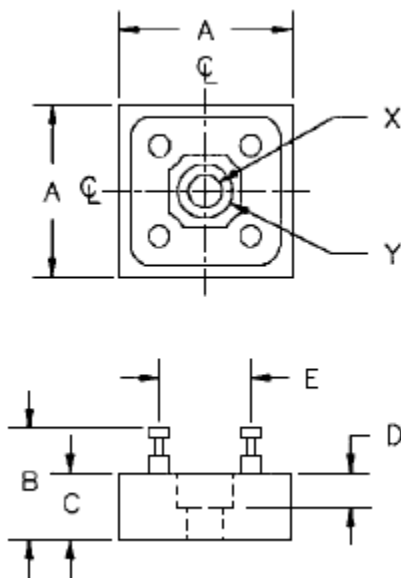
Rev A

### ELECTRICAL CHARACTERISTICS

Device	Reverse Voltage		Reverse Recovery*		Forward Voltage @ V <sub>RWM</sub> **		Reverse Current	
	V <sub>RWM</sub>		T <sub>rr</sub>		V <sub>F</sub>		I <sub>R</sub>	
					T <sub>C</sub> =25°C		T <sub>C</sub> =25°C	
	Volts		nS		Volts		μA	
SCAJ05	50	2000	1.10	1.0	2	50		
SCAJ1	100	2000	1.10	1.0	2	50		
SCAJ2	200	2000	1.10	1.0	2	50		
SCAJ4	400	2000	1.10	1.0	2	50		
SCAJ6	600	2000	1.10	1.0	2	50		
SCAJ05F	50	150	1.20	1.0	2	50		
SCAJ1F	100	150	1.20	1.0	2	50		
SCAJ2F	200	150	1.20	1.0	2	50		
SCAJ4F	400	150	1.20	1.0	2	50		
SCAJ6F	600	250	1.20	1.0	2	50		
SCAJ05FF	50	30	1.20	1.5	2	100		
SCAJ10FF	100	30	1.20	1.5	2	100		
SCAJ15FF	150	30	1.20	1.5	2	100		

\*I<sub>F</sub>= 0.5A, I<sub>R</sub>=1.0A, I<sub>rec</sub>=0.25A, measured on discretes prior to assembly

\*\* PW = 300μS, duty cycle ≤ 2%



DIMENSIONS			
NOTE	INCHES		
	MIN	MAX	
A	.735	.765	-
B	-	.50	-
C	-	.30	-
D	.135	.165	-
E	.38	.42	-
X	.132	.165	DIA
Y	.22	.25	DIA

NOTES:  
 TERMINALS MARKED  
 WITH COLOR DOT